

054364

RECEIVED
LARAMIE COUNTY
CHEYENNE, WY.

CERTIFIED LAND CORNER RECORDATION

'89 FEB 21 PM 1 08

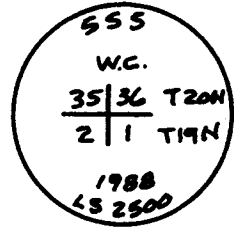
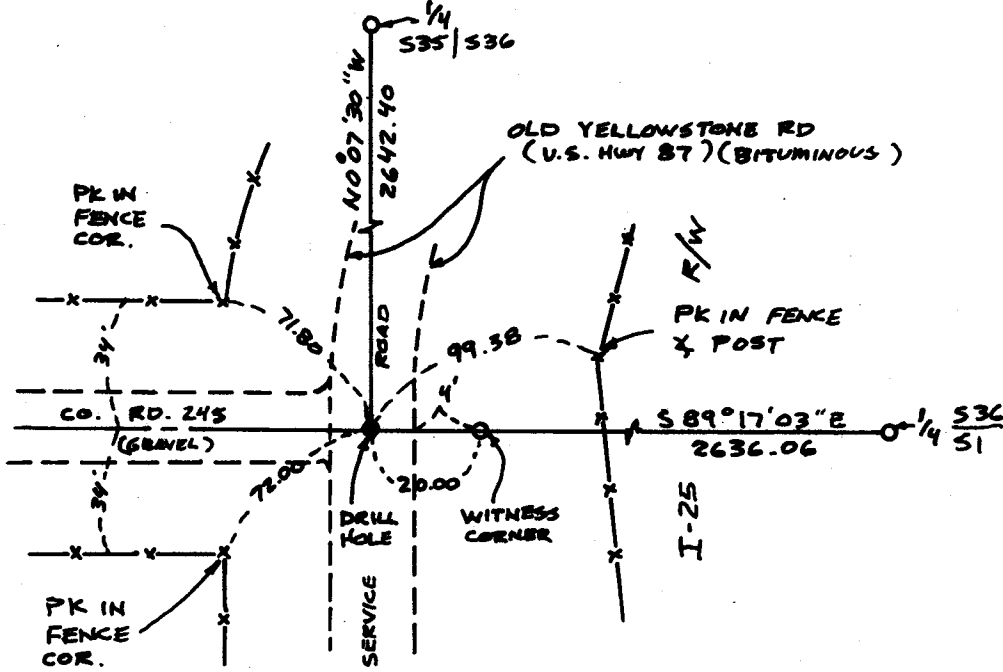
DESCRIPTION OF CORNER EVIDENCE FOUND, AND ORIGINAL RECORD (If known)

S.35 S.36 Found no evidence of previous monumentation.
S.2 S.1
T.20N. R.67W.
T.19N.
6th P.M. G.L.O. Record: Sandstone 18"x8"x5"

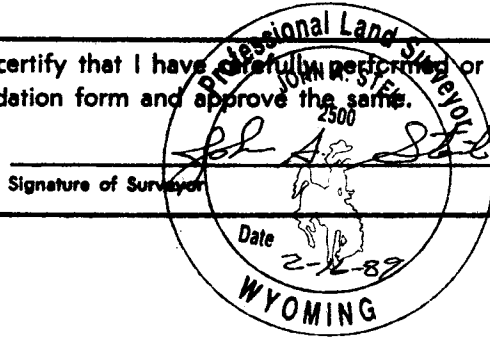
DESCRIPTION OF MONUMENT AND ACCESSORIES ESTABLISHED TO PERPETUATE THE ORIGINAL LOCATION OF THIS CORNER:

At the corner: Set 5/8"x18" rebar with 2" Aluminum Cap stamped as shown below for witness corner, flush with ground. Drill hole in concrete pavement 20' West of witness corner for section corner set from WHD R/W plan Project No. 175-B & centerline gravel road West.
Accessories : See ties below.

SKETCH, WITH COURSE AND DISTANCE TO ADJACENT CORNER IF DETERMINED IN THIS SURVEY. (May Sketch or Paste Reproduction on Reverse Side.)



I, John A. Steil certify that I have carefully performed or reviewed the work done on the diagrammed corner as reported on this recordation form and approve the same.



Signature of Surveyor: John A. Steil Registration No. L.S. 2500

STATE OF WYOMING,
Office of Clerk and Recorder,
County of _____

This "corner record" was filed for record on the _____ day of _____, 19____, was noted on the cross-index plat and is assigned page No. _____, in book No. _____.

Jack C. Whitcomb
County Official

Cross Index No.	A-21	T. 19N	R. 67W	Mer. 6th
	Z-21	T. 20N	R. 67W	Mer. 6th
		T. _____	R. _____	Mer. _____
		T. _____	R. _____	Mer. _____
		T. _____	R. _____	Mer. _____
		T. _____	R. _____	Mer. _____
		T. _____	R. _____	Mer. _____